



# Office of Public Works

## National Public Procurement

### Operations Unit

TYPE OF DOCUMENT: SPECIFICATION

ISSUE No: 2

NO. OF DOCUMENT: CPS 578B

DATE: October 2009

REPLACES ISSUE No: 1

DATE : December 2000

TOTAL No. OF PAGES: 10

=====

# ARMY

## DPM Operational Fleece Jacket No 1

ORIGINATOR(S)

NNPOU

Denis Mackin  
Inspector of Textiles

CHECKED  
AND  
APPROVED

NNPOU

Jim Ryan  
Assistant Director

Army

Lt Col Eddie Scanlon

**NATIONAL PUBLIC PROCUREMENT OPERATIONS UNIT****DPM OPERATIONAL FLEECE JACKET No. 1 FOR ARMY****SPECIFICATION**

**Note:** Firms tendering are asked to read this specification carefully as it may differ from previous prints, which are now obsolete.

The standard for any property of the Operational Fleece referred to which is not defined in this specification shall be that of the Agency's sealed sample. In case of any discrepancy between the sealed sample and this specification, the specification shall be followed. .

**MATERIALS DPM Operational Fleece No 1 for Army**

	Characteristic	Units	Specification
1	Colour		Specified DPM shades.
2	Finish		A dull finish softshell, windproof, breathable and water resistant high stretch fabric with a polyester / Elastane face cloth
3	Weight	Gr/M <sup>2</sup>	345 Gr/M <sup>2</sup>
4	Composition Outer Layer		93% Polyester and 7% Elastane
5	Mid Layer		TPU breathable membrane
6	Inner Layer		Micro fleece

- The distorted pattern of the main material shall comprise three colours screen-printed on a dyed (pale green) background or equivalent method to produce this standard.  
**This fabric shall be treated for Infra Red Reflectance.**

**The colours shall be as follows: -**

Colour	Area	Colour Code		IRR (%)
Pale Green	20%		See Sample Attached	50<IRR<60
Olive Green	48%		See Sample Attached	30<IRR<40
Woodland Brown	20%		See Sample Attached	15<IRR<25
Black	12%		See Sample Attached	IRR<20
			Total IRR (average) 33<IRR<35	

- Specular gloss to be measured in the range 380-770 nm with D65 light @ 10° Observance.
- IRR reflectance range 800 - 1200 nm

**4. Colour Fastness (for each colour)**

To Light	Min 5
To laundering Shade/colour	Min 4
Stains	Min 3 - 4
Perspiration	Min 4

**5. Colour / Shade specification As Per American Standard or its international equivalent.**

ASTM E 308-85 Standard method for computing the colours of objects using the CIE system.

**CIELAB 1976/DIN 6174**

**\*Manufacturers must state how many washes at recommended washing temperature can be completed before these properties begin to deteriorate.**

**CIELAB 1976/DIN 6174**

**\*Manufacturers must state how many washes at recommended washing temperature can be completed before these properties begin to deteriorate.**

		Illuminant / observer:		
		D65/10	A/10	C/10
<b>Black</b>	<b>L*</b>	<b>17.25</b>	<b>17.33</b>	<b>17.25</b>
	<b>a*</b>	<b>0.97</b>	<b>1.61</b>	<b>1.00</b>
	<b>b*</b>	<b>-0.56</b>	<b>-0.46</b>	<b>-0.55</b>
	<b>C*(ab)</b>	<b>1.12</b>	<b>1.67</b>	<b>1.14</b>
	<b>h(ab)</b>	<b>329.89</b>	<b>344.21</b>	<b>331.17</b>
<b>Brown</b>	<b>L*</b>	<b>20.49</b>	<b>20.80</b>	<b>19.60</b>
	<b>a*</b>	<b>5.95</b>	<b>8.40</b>	<b>6.86</b>
	<b>b*</b>	<b>5.48</b>	<b>8.52</b>	<b>6.47</b>
	<b>C*(ab)</b>	<b>9.62</b>	<b>11.96</b>	<b>9.43</b>
	<b>h (ab)</b>	<b>41.65</b>	<b>45.41</b>	<b>43.34</b>
<b>Olive Green</b>	<b>L*</b>	<b>29.21</b>	<b>30.27</b>	<b>29.85</b>
	<b>a*</b>	<b>-1.73</b>	<b>-2.20</b>	<b>-3.08</b>
	<b>b*</b>	<b>13.14</b>	<b>12.11</b>	<b>11.97</b>
	<b>C*(ab)</b>	<b>12.24</b>	<b>12.31</b>	<b>12.36</b>
	<b>h (ab)</b>	<b>103.13</b>	<b>100.28</b>	<b>104.42</b>

<b>Pale Green</b>	<b>L*</b>	<b>43.15</b>	<b>47.86</b>	<b>47.27</b>
	<b>a*</b>	<b>-4.21</b>	<b>-1.06</b>	<b>-2.26</b>
	<b>b*</b>	<b>13.48</b>	<b>13.03</b>	<b>12.59</b>
	<b>C*(ab)</b>	<b>12.69</b>	<b>13.07</b>	<b>12.79</b>
	<b>h(ab)</b>	<b>98.72</b>	<b>94.65</b>	<b>100.17</b>

**CPS 578B**

## **DESIGN DPM OPERATIONAL FLEECE No 1**

### **Collar**

- The collar shall be stand up collar.
- The collar shall be self - lined and measure 7 cm in depth.
- The collar shall be edged stitched 6 mm from the edge.
- The collar shall be wire edge stitched at the neck seam.

### **Slide Fastener**

- The fronts shall fasten with a heavy gauge slide fastener.
- The slide fastener shall close from the hem to the neck .

### **Fronts Left Storm Flap and Touch and Grip (Female) Strip**

- The left front forepart shall be fitted with a storm flap 7 cm in width.
- The storm flap shall extend from the neck to the hem.
- The full storm flap shall be edge stitched 6 mm from the edge as per sealed sample.
- The inside of the storm flap shall incorporate a strip of touch and grip (female).
- The touch and grip (female) shall be 2 cm in width.
- The touch and grip (female) shall be positioned 15 mm from the top and 10 mm from the bottom of the storm flap.
- The touch and grip (females shall be sewn to the storm flap 7 mm from the edge.
- The stitching of the touch and grip (female) shall not be seen on the front of the storm flap.

### **Front Left Storm Flap Behind Slide Fastener and Touch and Grip (Male) Strip.**

- There shall be a storm flap sewn behind the slide fastener on the right forepart as per sealed sample.
- The storm flap shall measure 4 cm in width.
- The storm flap shall be curved at both ends as per sealed sample.
- The storm flap shall be edge stitched 6 mm from the edge.
- The front edge at the slide fastener shall be edge stitched 6 mm from the edge.
- The inside of the storm flap shall incorporate a strip of touch and grip (female).
- The touch and grip (male) shall be 2.5 cm in width.
- The touch and grip (male) shall be positioned 15 mm from the top and 10 mm from the bottom of the storm flap.
- The touch and grip (male) shall be sewn to the left front forepart 7 mm from the edge.



**Tab for Holding Rank Marking on Left Storm Flap**

- A pointed tab measuring 5 cm at base to 5.5 cm at the buttonhole and 15.5 cm in length shall be sewn to the storm flap.
- The tap shall be positioned centrally on the storm flap and 19 cm down from the top of the storm flap.
- There shall be a strip of touch and grip (male) measuring 2 cm X 4 cm sewn horizontally to the tab 3.5 cm from the point of the tap.
- The stitching of the touch and grip (male) shall not be seen on the front of the tab.
- There shall be a strip of touch and grip (female) measuring 2.5 cm X 4 cm sewn horizontally to the storm flap to accommodate the tab touch and grip (male).
- The stitching of the touch and grip (female) shall not be seen on the back of the storm flap.
- The tab shall be edge stitched 6 mm from the edge.
- The buttonhole shall accommodate a button 19 mm approx in diameter.
- The buttons shall accommodate to openings in the centre so that the loop in self material 8 mm in width shall pass through as per sealed sample.
- The button loop shall measure 8 mm X 40 mm finished.
- The horizontal button loop shall be bar tacked at each end as per sealed sample.

**Shoulder Piece**

- There shall be a shoulder piece positioned centrally on the shoulder as per sealed sample.
- It shall measure 18.5 cm at the sleeve crown, 12 cm at the front and back and then tapers into the neck seam which shall measure 7 cm.
- The shoulder piece shall be double edged stitched 6 mm apart.

**Touch and Grip (Female) for Badge No 2 Name on Right Breast Forepart**

- A strip of touch and grip (female) measuring 25 mm in width and the 170 cm length shall be sewn onto the right forepart 11 cm down from the neck gorge seam.

**Defence Forces Ireland Badge on Left Breast Forepart**

- The Defence Forces Ireland Badge shall be sewn onto the left forepart 11 cm down from the neck gorge seam..

**Badge No 310 IRELAND On Sleeve**

- The Tricolour Badge No 310M IRELAND shall be sewn to the left sleeve centrally 5 cm from the sleeve head.

**Front Vertical Pockets and Pocket Bags**

- There shall be two slanted pockets with an 18 cm opening and fastened with a slide fastener.
- The slide fastener shall be waterproof.
- The slanted pockets shall be positioned 6 cm from the bottom edge, 6.5 cm from the side seam at the bottom and 8 cm from the side seam at the top of the pocket.
- The pocket bags shall be in the as lining.

- The pocket bag shall extend to the front edge and sewn into the slide fastener seam.
- The top and bottom of the pocket bag shall be sewn across the forepart.
- The pocket mouth shall be wire edged stitched.

### **Sleeves**

- The sleeve shall be one piece type.
- The sleeve seams shall be double edged stitched 6 mm apart.

### **Sleeve Lining**

The sleeve shall be lined with a polyester lining 80 Gr/M<sup>2</sup> approx.

### **Cuffs Hem**

- The cuff hem shall be 2.5 cm.

### **Storm Cuff**

- The inner cuff is attached to the sleeve; and comprises a tube of 8 cm of the extended cuff 3 cm of lining sewn to the knitted storm cuff as per sealed sample.
- The knitted storm cuff of 8 cm of elasticated material as per sealed sample.
- There shall be a slit 4.5 cm in the storm cuff as per sealed sample.

### **Hem Tunnel, Elastic Drawcord and Buttonholes**

- The hem shall have a tunnel sewn down as per sealed sample.
- It shall incorporate an elastic drawcord, which shall protrude through buttonholes 2 cm from the side seam on each side of the side seam.
- The buttonholes shall be 10 mm in width.
- The drawcord shall be fitted with a toggle barrel type spring clip for adjusting.
- The drawcord shall be held in place with a loop on the inner side seam as per sealed sample.

### **Hem**

- The hem seam shall be sewn 2.5 cm from the edge.

### **Front Linings**

- The front foreparts to be lined with a fleece type lining as per sealed sample.

### **Inside Breast Pocket in Left Forepart Lining**

- There shall be an inside breast pocket in the left forepart
- The pocket mouth opening shall measure 23 cm.
- The pocket mouth shall fasten with a concealed nylon slide fastener as per sealed sample.
- The pocket bag shall be in the lining fleece material measuring 30 cm in depth.

**Inside Patch Pocket with Flap on Right Forepart Lining**

- There shall be an inside patch pocket on the right forepart
- The patch pocket shall measure 8.5 in width and 12 cm in length.
- The patch pocket mouth turn down shall be 2 cm.
- The patch pocket flap shall measure 5 cm in depth and 8. cm in width.
- The flap shall fasten with a strip of touch and grip 2 cm X 3 cm centrally positioned 10 mm from the flap edge.

**Back Unlined**

- The back shall be unlined.

**Hanger**

- The hanger shall be positioned on the back neck
- The hanger shall be stay tape black in colour 10 mm in width and 8 cm in length.

**Please see sketch attached to the specification for general guidance only.**

**MARKING AND LABELING**

- Each glove shall be fitted with a durable label on which shall be printed, in clear characters:
- The garment size.
- Contractor's initials and year of manufacture.
- A second label shall state the manufacturers' instructions for washing/cleaning and aftercare of the garment.

**BARCODE AND ID LABEL**

- Each fleece jacket shall be equipped on the inside with a durable, hard wearing and legible heat sealed label which shall be an unique and clear mark of each fleece jacket.
- The label shall allow for the barcode, the soldier name and number to be entered with a laundry permanent marker.

**PACKAGING**

- Each fleece jacket shall be delivered separately in clear plastic packaging and delivered in boxes of 10 pieces.
- Each box shall be clearly marked with the barcode, the initials or name of the manufacturer and details of the contents-i.e. number of items and sizes.

**October 2009**



**MEASUREMENTS OPERATIONAL DPM FLEECE JACKET No. 1**

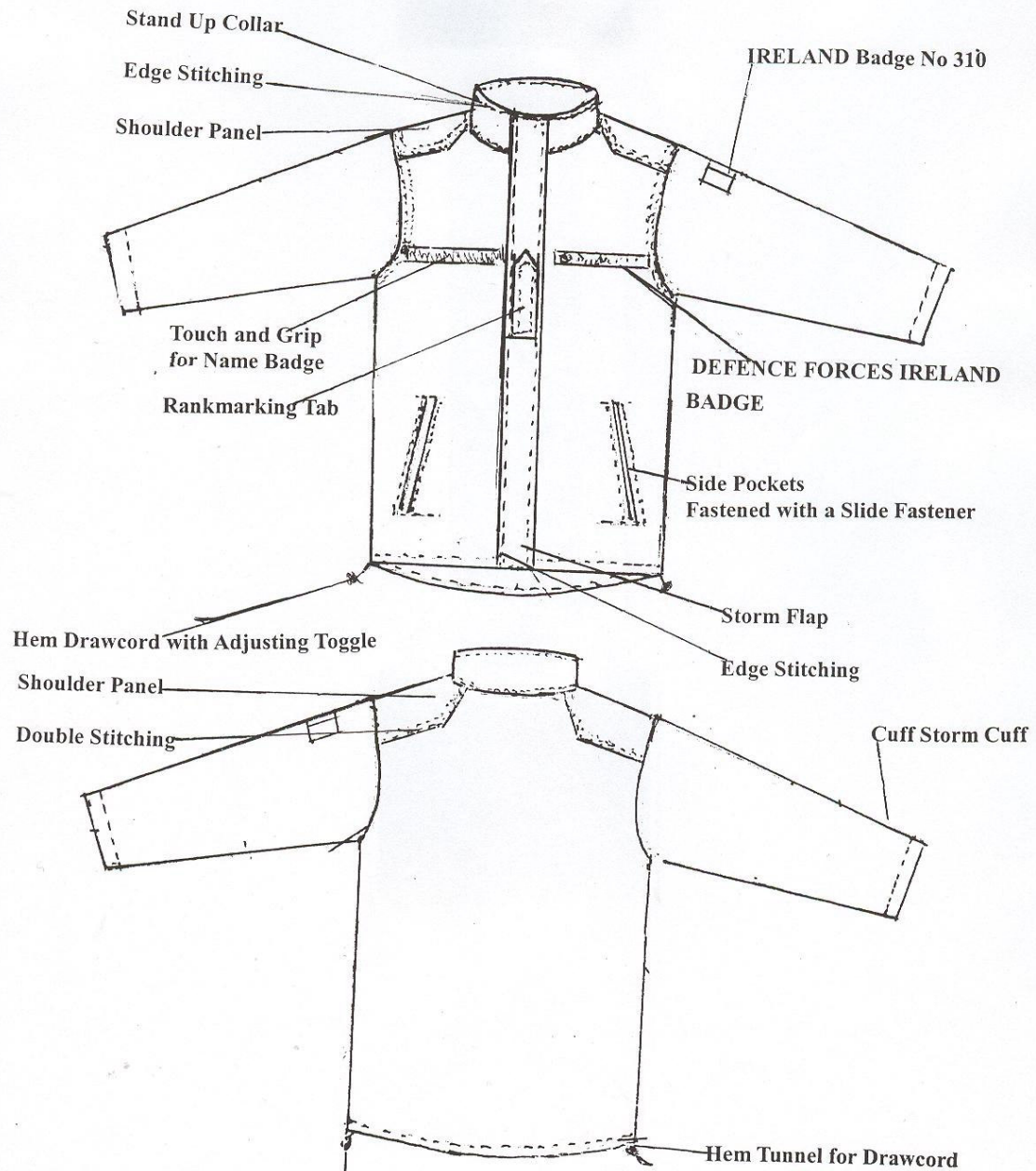
<b>SIZE</b>	<b>LENGTH</b>	<b>CHEST</b>	<b>WAIST</b>	<b>SLEEVE FROM COLLAR SIDE</b>	<b>ARM CURVE</b>	<b>COLLAR LENGTH</b>	<b>COLLAR HEIGHT</b>	<b>CUFF</b>
	<b>cm</b>	<b>cm</b>	<b>cm</b>	<b>cm</b>	<b>cm</b>	<b>cm</b>	<b>cm</b>	<b>cm</b>
<b>X SMALL</b>	<b>78</b>	<b>112</b>	<b>108</b>	<b>79</b>	<b>28</b>	<b>48</b>	<b>7.5</b>	<b>12</b>
<b>SMALL</b>	<b>78</b>	<b>116</b>	<b>112</b>	<b>79</b>	<b>28</b>	<b>49</b>	<b>7.5</b>	<b>12</b>
<b>MEDIUM</b>	<b>78</b>	<b>120</b>	<b>116</b>	<b>81</b>	<b>29</b>	<b>50</b>	<b>7.5</b>	<b>13</b>
<b>LARGE</b>	<b>81</b>	<b>124</b>	<b>120</b>	<b>83</b>	<b>30</b>	<b>51</b>	<b>7.5</b>	<b>13</b>
<b>X LARGE</b>	<b>81</b>	<b>130</b>	<b>126</b>	<b>85</b>	<b>31</b>	<b>52</b>	<b>7.5</b>	<b>14</b>
<b>XX LARGE</b>	<b>81</b>	<b>136</b>	<b>130</b>	<b>87</b>	<b>32</b>	<b>53</b>	<b>7.5</b>	<b>14</b>
<b>XXX LARGE</b>	<b>81</b>	<b>142</b>	<b>134</b>	<b>89</b>	<b>33</b>	<b>54</b>	<b>7.5</b>	<b>14</b>

**October 2009**

NATIONAL PUBLIC PROCUREMENT OPERATIONS UNIT

DPM OPERATIONAL FLEECE JACKET No. 1 FOR ARMY

SPECIFICATION



October 2009

**BADGE No 310 (IRELAND) FOR LEFT SLEEVE**

- The badge shall be embroidered in green, white and orange panels of equal dimensions, beneath a panel of gold, measuring 2 cm in depth.
- The badge and the panel shall be, bordered in black and so finished as to prevent the fraying of the edges.
- The overall dimensions of the badge shall be 7 cm in length and 5.75 cm in width.
- The lettering **IRELAND**, measuring 1 cm in height, shall be embroidered, in black, in a central position on the panel.
- Each badge shall be embroidered to ensure a firm clear finish.
- Each badge shall be fused with a suitable fusible interlining.

**BADGE DEFENCE FORCES IRELAND FOR TOP OF LEFT BREAST FLAP**

- A rectangular border, measuring 25 mm approx. in length at top, 170 mm approx. in width.
- The letters **DEFENCE FORCES IRELAND** in black 10 mm approx. in height and 2 mm in width approx shall be embroidered in a central position and equidistant from each end of the border.
- The crest of the Defence Forces shall be in black before the words **DEFENCE FORCES IRELAND** as per sealed sample.
- The border shall be embroidered in green thread.
- The badge shall have touch and grip tape (male) sewn to the back with the touch and grip (female) stuck to it.
- The touch and grip shall match the colour of the cotton as per Sealed Sample
- The badge base shall be 100% green polyester cotton as per Sealed Sample

