



Offshore Raiding Craft Forward Console Variant



Main Specification

Length OA (inc fender)	9.1m
Beam OA (inc fender)	2.9m
Draft Light / Loaded	0.56m / 0.66m
Displacement Light / Loaded	4200 kg inc fuel & 2 crew / 5900 kg
Speed Light / Loaded	40 knots / 32 knots
Range	In excess of 200nm
Turning	1.5 boat lengths at max speed
Acceleration	0 - 30 Knts in 10 seconds
Stopping	1.5 boat lengths from max speed
Engines	Twin Steyr M0256K43 high speed diesel engines each developing 250Hp/184Kw at 4300rpm
Gearboxes	ZF63 reduction gearbox (1.514:1) Propulsion Twin Rolls Royce (Kamewa) FF270 Waterjets
Hull	Fabricated Aluminium (Grade 5083)



Offshore Raiding Craft Forward Console Variant

Capacities

Main Fuel Tank	635 Litres
Reserve Fuel Tank	85 Litres
Total Payload capacity	Combination of troops, equipment and weapons up to 1700kg

Auxiliary Equipment

Communications - Marine VHF.
 Navigation - Chart plotter with DGPS
 Electrical - 24V DC, Insulated return

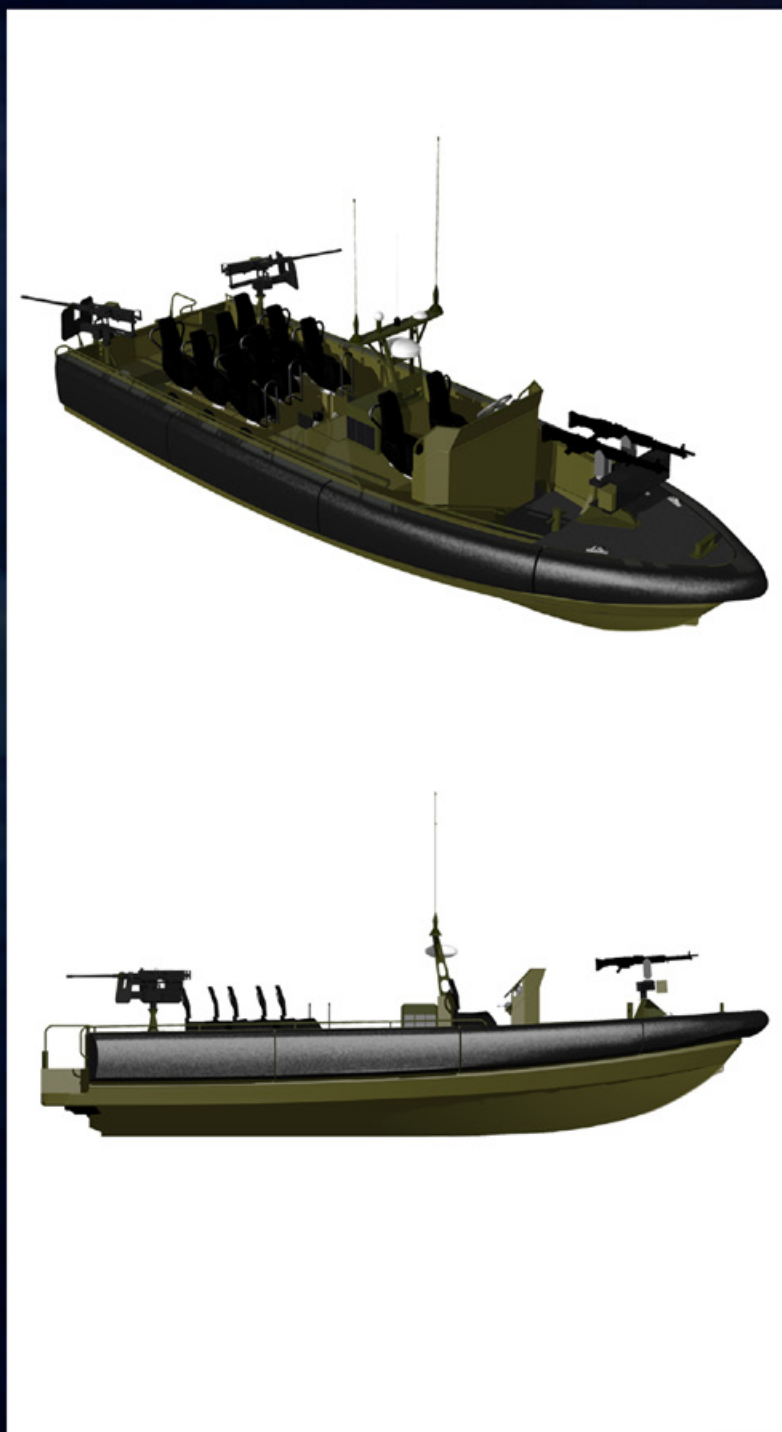
Special Features

Including:

- Foward console position to provide aft loading area
- Optional Dyneema ballistic protection to defeat 7.62mm x 39 Ball at 20m
- Elastomer covered closed cell PU foam fender
- Air transportable in C130 J MK IV or under-slung Chinook CH47 and Merlin Helicopters
- Removable seating and fairings for ease of transportation and flexibility of function
- Optional road trailer conforming to EU regulations
- Infrared and visible convoy lights
- Infrared flood light
- Optional Equipment
- Shipping cradle
- Radar reflector
- Intercom system
- Boat cover
- Launching trolley
- Military Communications systems
- Boat trailer
- Night vision camera system
- HD radar system

Classification

Built in accordance with MCA SCV – Code of Practice,
 Structure designed and surveyed to LRS SSC rules



Holyhead Marine Services Limited

Newry Beach Yard, Holyhead, Anglesey, LL65 1YB, Wales, UK

Tel: +44(0)1407 760111 Fax: +44(0)1407 764531

e-mail: marine.services@holyhead.co.uk

website: www.holyheadmarine.co.uk

Registered in London 895484

